



*Czech Lighting Society*



*Slovak Lighting Society*

## FIRST INFORMATION



LIGHTING AT THE DAWN  
OF THE NEW ERA

**20 – 22 September 2022**

**14<sup>th</sup> European Lighting Conference**

**LUX EUROPA 2022**

**PRAGUE – CZECH REPUBLIC – HEART OF EUROPE**

**Hotel OLYMPIK / ARTEMIS**

# 1. INVITATION

On behalf of the organizers, Czech Lighting Society jointly with the Slovak Lighting Society, we are pleased to invite You to participate in the 14<sup>th</sup> European lighting conference LUX EUROPA 2022 which will be held from 20<sup>th</sup> to 22<sup>nd</sup> September 2022 in Prague – capital city of Czechia, cultural centre of middle Europe and an attractive touristic destination.

Aim of the conference is to present the newest scientific and professional knowledge and achievements in the field of light and lighting with emphasize on regionally specific problems of the European countries. State-of-the-art in lighting technology will be intermediated by reputable experts, who will share with You results of their latest work and recent professional experience. The conference will provide space for broad discussion, overview of modern and progressive lighting products, establishment of new business contacts and strengthen those existing. Manufacturers and trading companies will have opportunity to present their products, services and solutions.

Motto of the conference is „Lighting at the Dawn of the New Era“. Standing at the begin of the decade and looking towards new post-pandemic horizons, the conference would like to highlight key topics of today's lighting as such as:

- LED lighting technology developments
- new approaches to daylighting of buildings
- human centric and integrative lighting
- utilization of optical radiation to support living organism
- germicidal radiation in cope with COVID-19
- specific lighting applications indoors and outdoors
- dynamic, adaptive and smart lighting
- photometry and colorimetry
- environmental aspects of antropogenic lighting
- increasing energy efficiency of lighting systems
- lighting education and professional training

The conference is intended for wider professional audience comprising lighting engineers, electrical engineers, architects, civil engineers – working as lighting designers, traders, suppliers, retailers, investors, implementers, researchers etc.

Social part of the conference will comprise boat trip on the Vltava river exhibiting touristic highlights of the Prague and gala dinner featuring traditional Czech folklore. We are also preparing an attractive programme for accompanying persons.

The conference LUX EUROPA 2022 is an ideal opportunity to learn something new, to meet colleagues and to establish new acquaintances. Book in Your calendar, we are looking forward to see You in Prague!



Dionýz Gašparovský  
*President of the Council Lux Europa*  
*Co-chairman of the Organization Team*



Tomáš Novák  
*Chairman of the Organization Team*

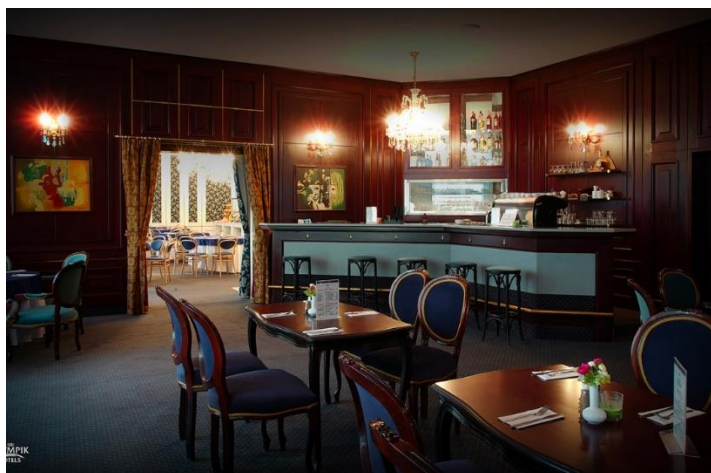
## 2. VENUE OF THE CONFERENCE

### **Hotels ARTEMIS \*\*\*\***

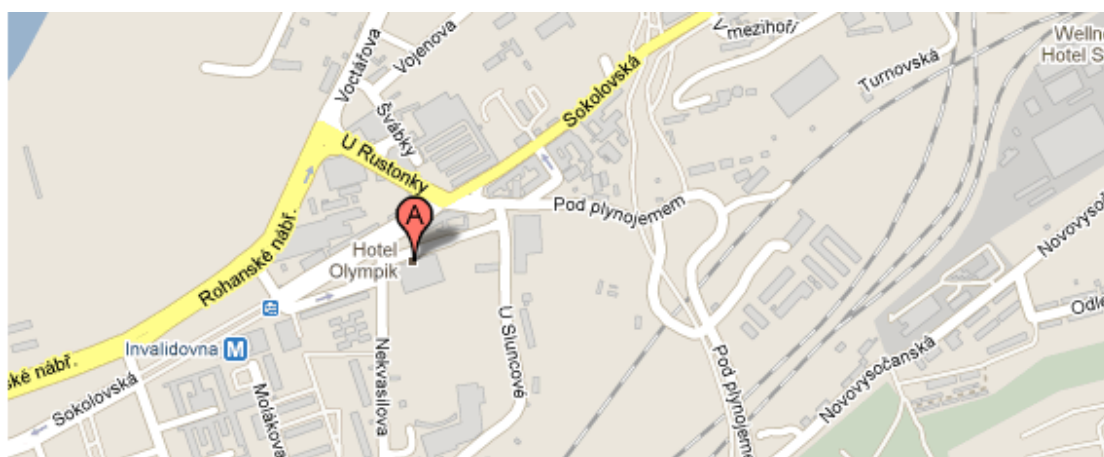
*U Sluncové 14, Praha 8 186 76*

*Recepce hotelu tel: +420 266 184 889*

*<https://www.olympik.cz/cz/artemis/>*



Accommodation is available directly in hotels of the conference venue complex.



*Airport*  
16 km / 25 minutes (taxi)



*Historical centre*  
10 minutes (metro)



*Nearest metro station*  
Invalidovna, 5 minutes walking



### 3. PRAGUE – capital city in the heart of Europe

#### *Welcome to Czech Republic!*

Destination Czech Republic: Also known as Czechia, a landlocked country in Central Europe is bordered by Austria, Germany, Poland, and Slovakia. Population of about 10,5 million inhabitants live in a country covering 78,867 km<sup>2</sup>. Mild continental climate in a land full of agricultural fields, mountains, forests, lakes and rivers makes it very pleasant for living. Historical sites can be found spread across the country, not just in city centres. Inheritance of the famous medieval kingdom of Bohemia belongs to one of highlights when visiting Czechia. Come and immerse Yourself into atmosphere of the place where history shakes hand with modern culture, explore hidden charm of natural spots, touch spirit of the proud but hospitable nation.

Czechia is also best known for hundreds of medieval castles, tasteful cuisine, benchmark industry, Škoda and Tatra cars, Baťa shoes, FAB lockers just to name few brands known worldwide. Czech beer is legendary; evening spent with friends and couple of mugs must be an unforgettable experience. The original Budweiser of Budvar and the Pilsner Urquell which originated and gave name for the most prevalent, pale lager type of beer, are crowns of the Czech brewery. Notable Czech people are: Miloš Forman (film maker and director), Ivan Lendl (tennis player), Jaromír Jágr (NHL ice hockey legend), Franz Kafka (novelist), Sigmund Freud (founder of psychoanalysis), Antonin Dvorak (composer), Václav Havel (dissident, novelist and president), Gregor Mendel (biologist).



#### Practical information

- **Language:** Czech (west Slavic group)
- **Currency:** koruna (CZK, Kč), average exchange rate 26 CZK/EUR
- **Business hours:** 09:00 – 18:00, shopping malls open until 21:00
- **Electric outlets:** 230 V / 50 Hz, plug type C/E
- **Mobile network:** very good coverage, major service providers are O<sub>2</sub>, T-mobile and Vodafone
- **Transportation:** international airports, railway networks and bus routes connect the country node Prague and other major Czech cities with many destinations in Europe and outside; Prague lies at crossing of transcontinental transportation corridors

#### *City of hundred towers: PRAGUE*

Prague is the capital and largest city in the Czech Republic, the 13<sup>th</sup> largest city in the European Union and the historical capital of Bohemia. Situated on the Vltava river, Prague is home to about 1,3 million people, while its metropolitan area is estimated to have a population of 2,7 million. The city has a temperate oceanic climate, with relatively warm summers and chilly winters.

Prague is a political, cultural, and economic centre of Central Europe complete with a rich history. Founded during the Romanesque and flourishing by the Gothic, Renaissance and Baroque eras, Prague was the capital of the Kingdom of Bohemia and the main residence of several Holy Roman Emperors, most notably of Charles IV (r. 1346–1378). It was an important city to the Habsburg Monarchy and its Austro-Hungarian Empire. The city played major roles in the Bohemian and Protestant Reformation, the Thirty Years' War and in 20<sup>th</sup>-century history as the capital of Czechoslovakia between the World Wars and the post-war Communist era.

Prague is home to a number of well-known cultural attractions, many of which survived the violence and destruction of 20th-century Europe. Main attractions include Prague Castle, Charles Bridge, Old Town Square with the Prague astronomical clock, the Jewish Quarter, Petřín hill and Vyšehrad. Since 1992, the extensive historic centre of Prague has been included in the UNESCO list of World Heritage Sites.

The city has more than ten major museums, along with numerous theatres, galleries, cinemas, and other historical exhibits. An extensive modern public transportation system connects the city. It is home to a wide range of public and private schools, including Charles University in Prague, the oldest university in Central Europe.

Prague is classified as an "Alpha-" global city according to GaWC studies and ranked sixth in the Tripadvisor world list of best destinations in 2016. In 2019, the city was ranked as 69<sup>th</sup> most liveable city in the world by Mercer. In the same year, the PICSA Index ranked the city as 13<sup>th</sup> most liveable city in the world. Its rich history makes it a popular tourist destination and as of 2017, the city receives more than 8,5 million international visitors annually. In 2017, Prague was listed as the fifth most visited European city after London, Paris, Rome, and Istanbul.



#### 4. FRAMEWORK CONFERENCE PROGRAMME

	<b>September 20</b>	<b>September 21</b>	<b>September 22</b>
<b>Morning</b>	Registration Opening Keynote lectures	Plenary session Company presentations	Parallel sessions
<b>12:00 – 13:00</b>	<b>LUNCH</b>	<b>LUNCH</b>	<b>LUNCH</b>
<b>Afternoon</b>	Parallel sessions Poster session Exhibition	Parallel sessions Poster session Exhibition	Parallel workshops Closure
<b>Evening</b>	Boat trip on Vltava	Gala dinner	

## 5. PROGRAMME FOR ACCOMPANYING PERSONS \*

<b>September 20</b>	Highlights of Prague (half-day tour, afternoon)
<b>September 21</b>	Český Krumlov: medieval heritage (full-day trip, lunch included)
<b>September 22</b>	Prague old town walking tour (half-day tour, forenoon)

\* *Optional tours for extra fee*

## 6. CONFERENCE LANGUAGE

Conference language is English.

## 7. IMPORTANT DEADLINES

<b>31 March 2022</b>	Second information
<b>15 June 2022</b>	Early-bird registration deadline
<b>30 June 2022</b>	Third information
<b>15 August 2022</b>	Guarantee of accomodation
<b>10 September 2022</b>	Standard registration deadline

## 8. ORGANIZING TEAM

### *Chairmen:*

Tomáš Novák	ČSO	tomas.novak1@vsb.cz	+420 602 724 207
Dionýz Gašparovský	SSTS	dionyz.gasparovsky@stuba.sk	+421 903 455 035

### *Members:*

Ivana Sokanská	ČSO	sokanska@seznam.cz	+420 608 468 956
Pavel Valíček	ČSO	pavel.valicek@vsb.cz	+420 603 170 348
Peter Janiga	SSTS	peter.janiga@stuba.sk	+421 904 972 150
Jana Raditschová	SSTS	raditschova@stuba.sk	+421 903 723 282

## 9. SECRETARIAT

Česká společnost pro osvětlování, z. s.  
17. listopadu 2172/15  
708 00 Ostrava-Poruba  
Czech Republic

Person in charge:

**Ivana Sokanská**

☎ +420 608 468 956

✉ sokanska@seznam.cz

## 10. CONFERENCE WEBSITE

[www.luxeuropa2022.eu](http://www.luxeuropa2022.eu)

### Notes: